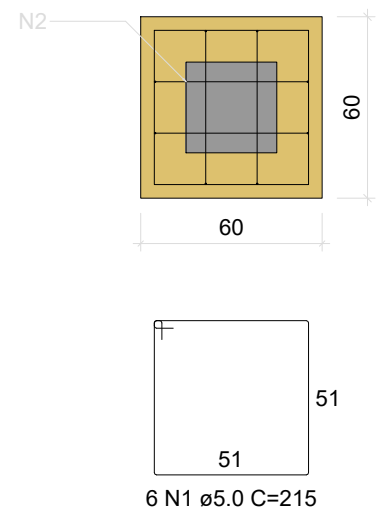
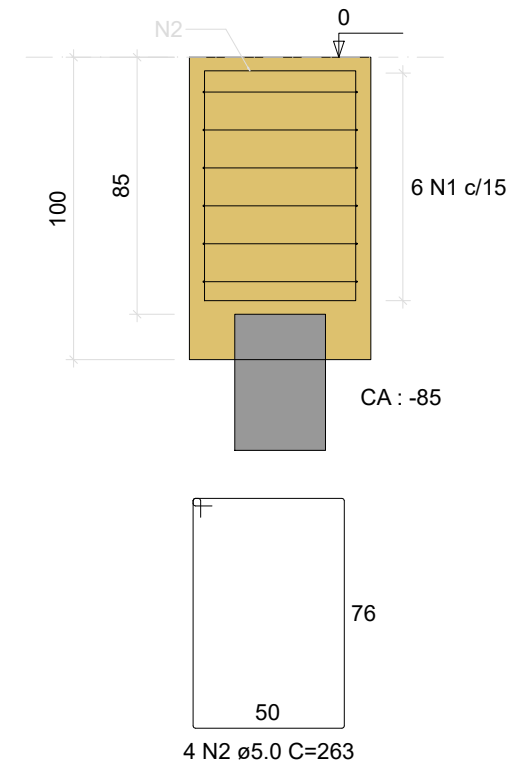


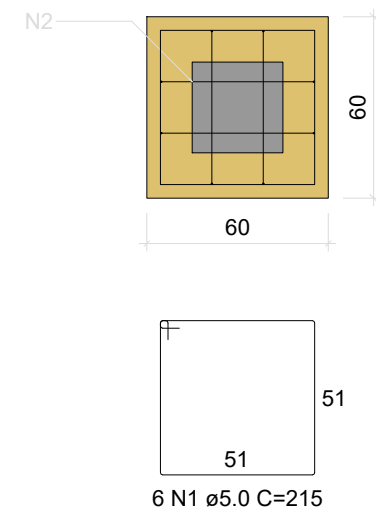
BI-P20
1xR30
PLANTA
ESC 1:25



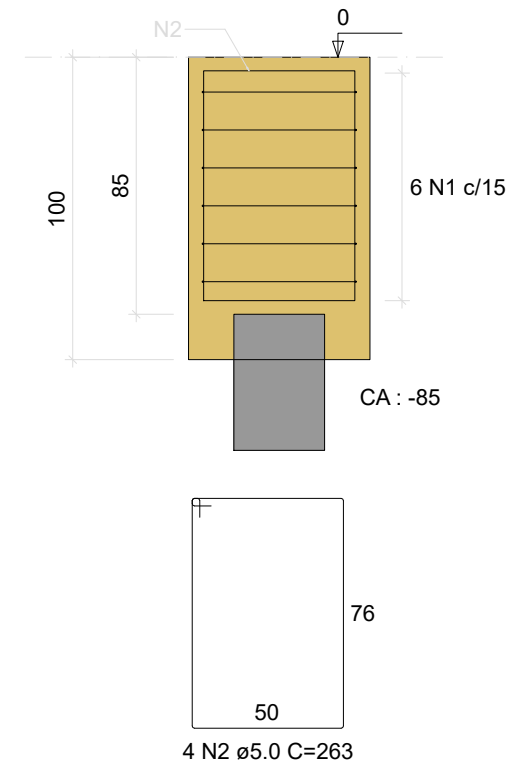
CORTE
ESC 1:25



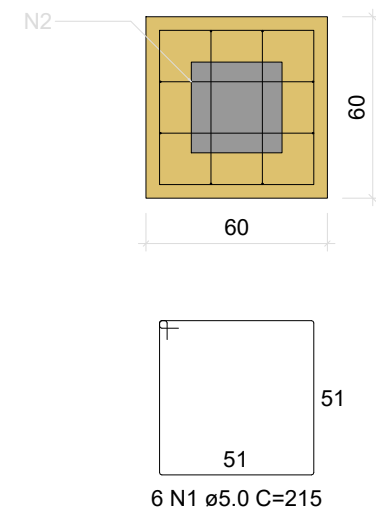
BI-P21
1xR30
PLANTA
ESC 1:25



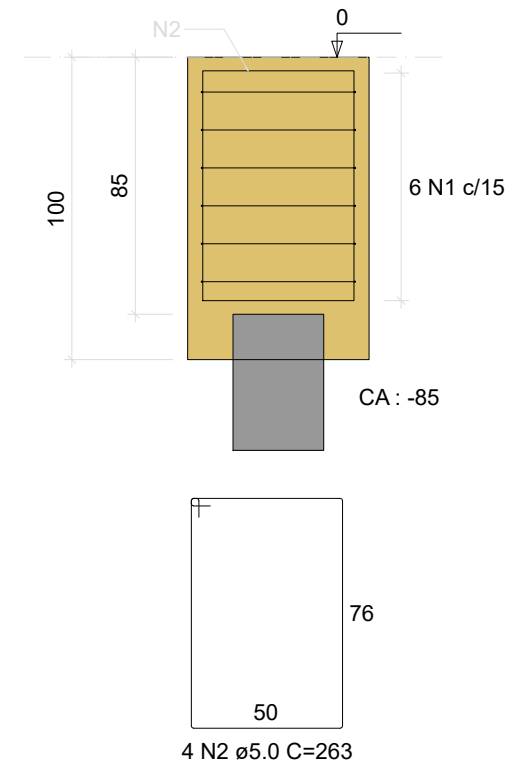
CORTE
ESC 1:25



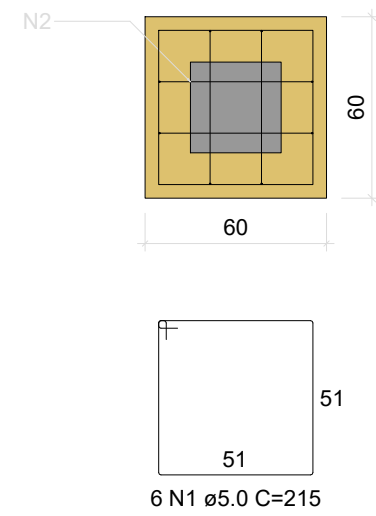
BI-P22
1xR30
PLANTA
ESC 1:25



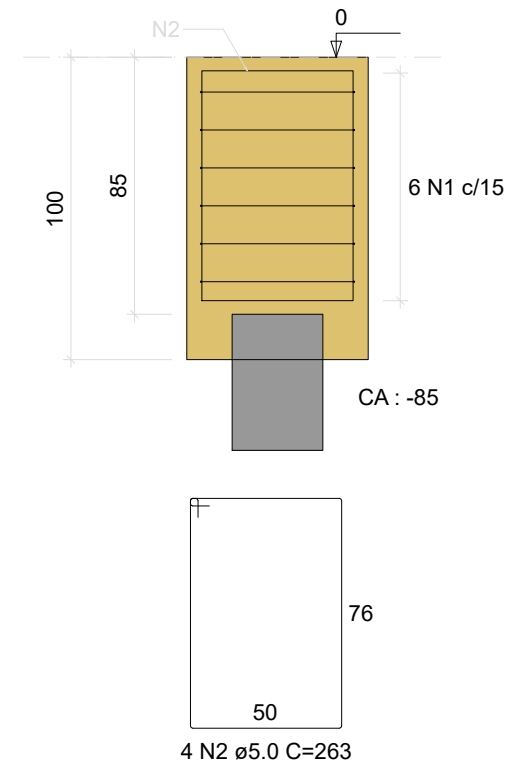
CORTE
ESC 1:25



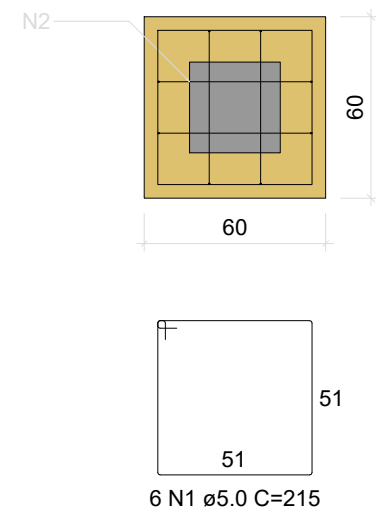
BI-P23
1xR30
PLANTA
ESC 1:25



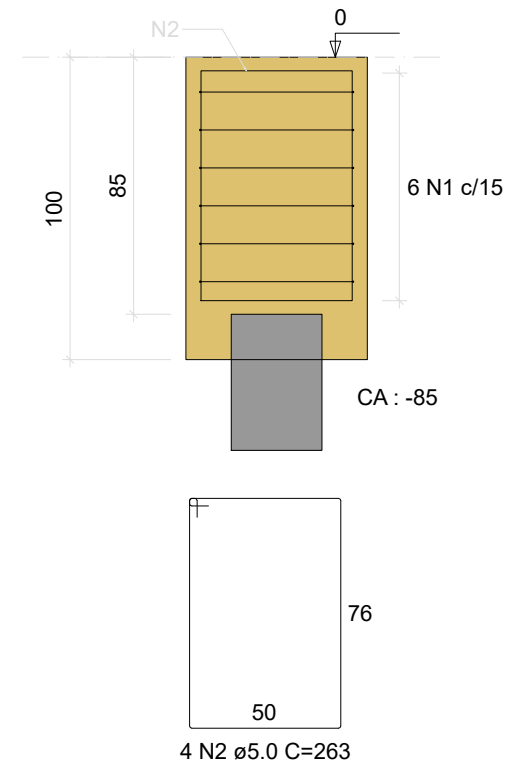
CORTE
ESC 1:25



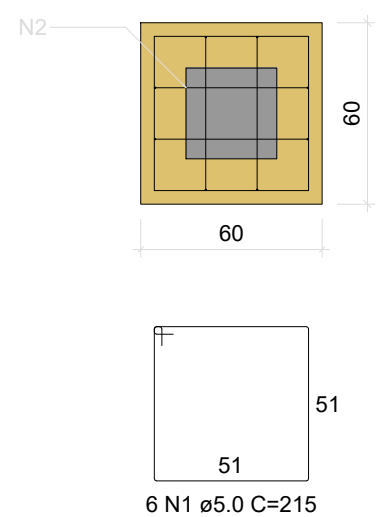
BI-P24
1xR30
PLANTA
ESC 1:25



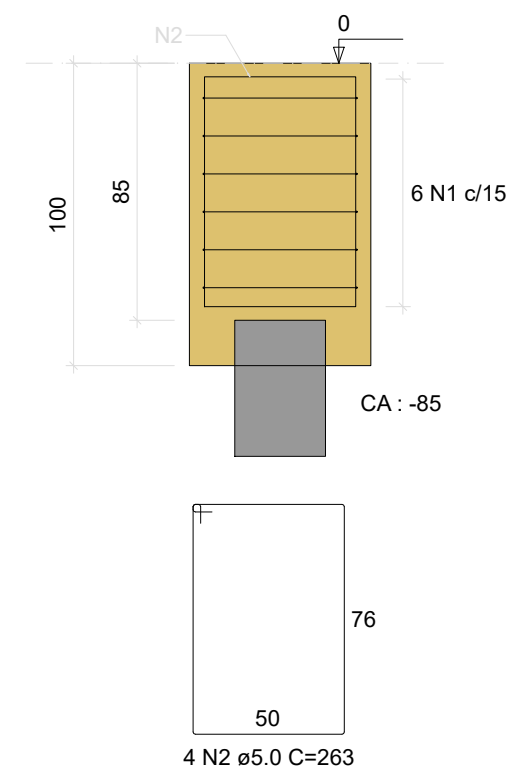
CORTE
ESC 1:25



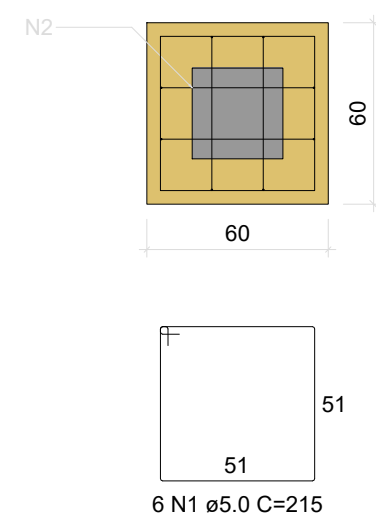
BI-P25
1xR30
PLANTA
ESC 1:25



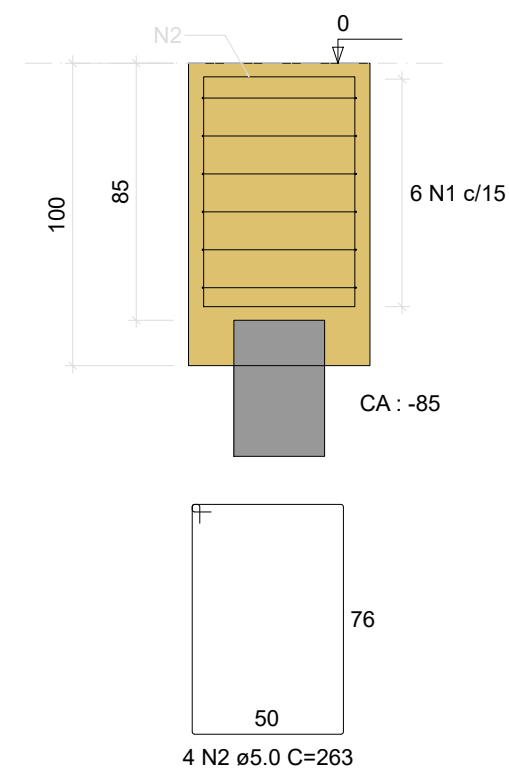
CORTE
ESC 1:25



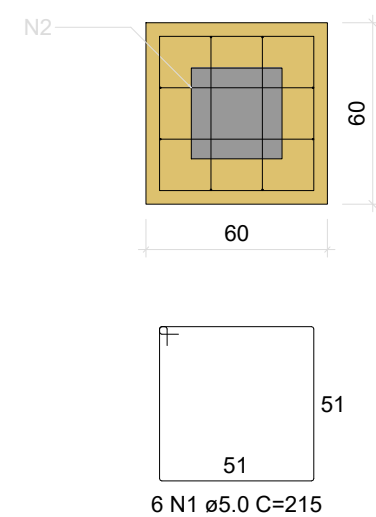
BI-P26
1xR30
PLANTA
ESC 1:25



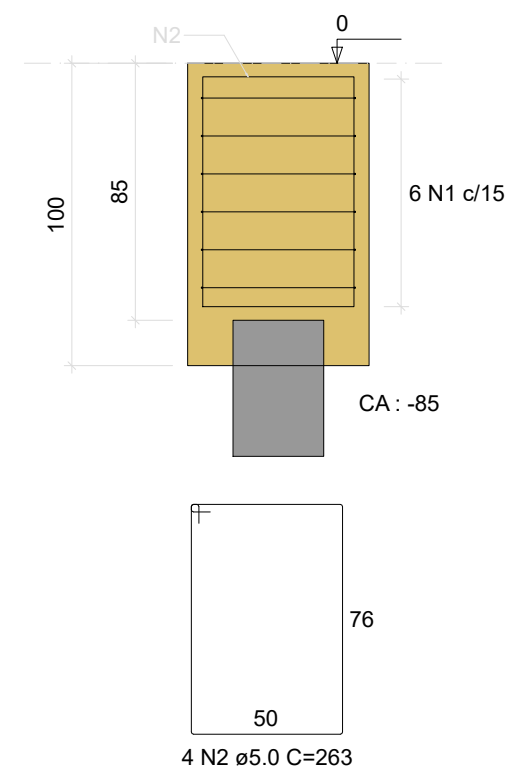
CORTE
ESC 1:25



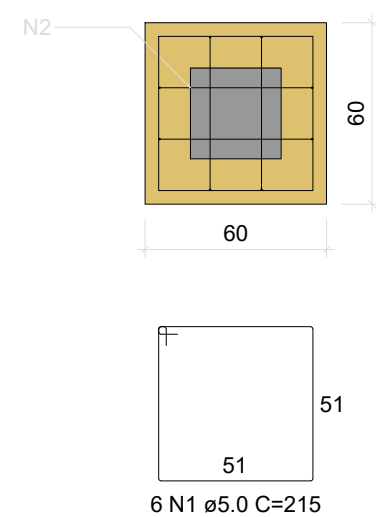
BI-P27
1xR30
PLANTA
ESC 1:25



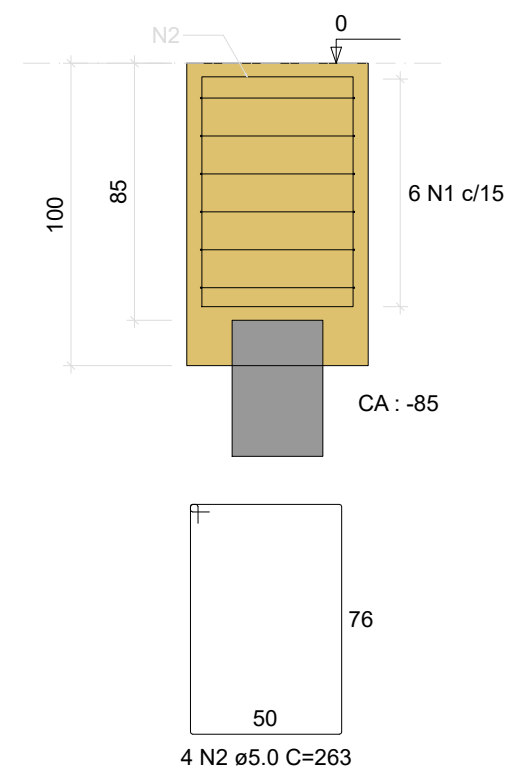
CORTE
ESC 1:25



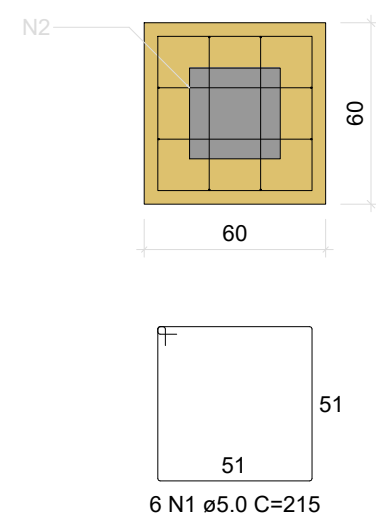
BI-P28
1xR30
PLANTA
ESC 1:25



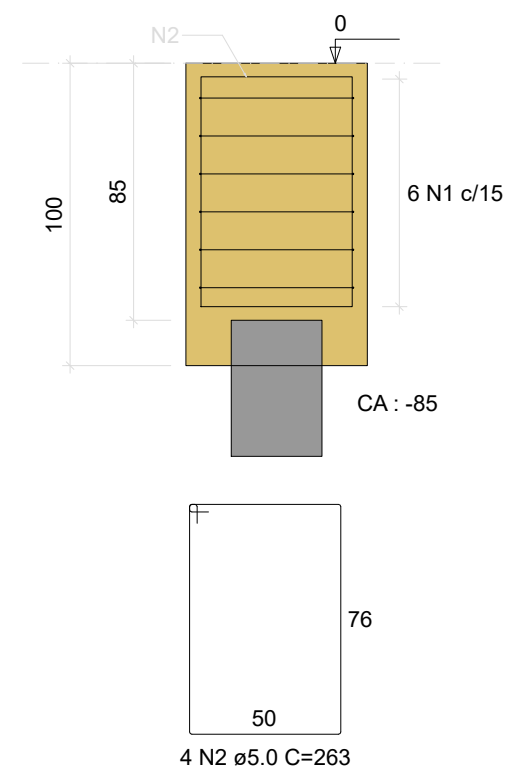
CORTE
ESC 1:25



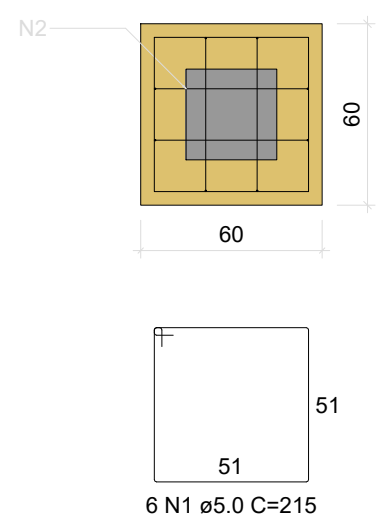
BI-P29
1xR30
PLANTA
ESC 1:25



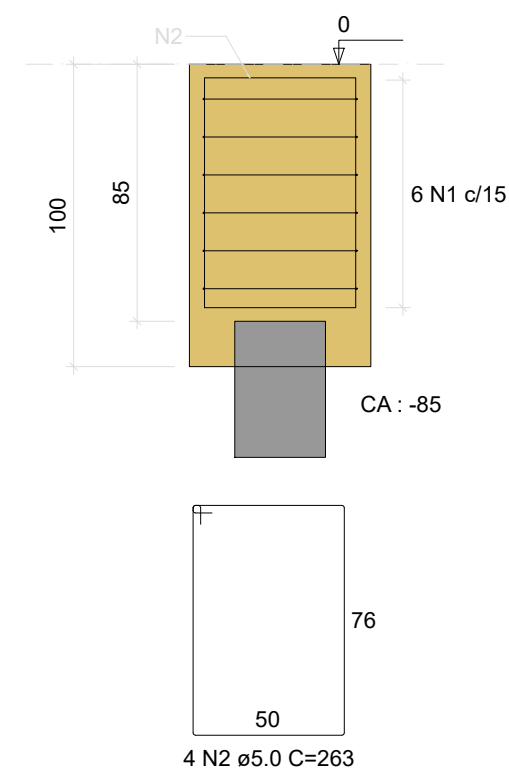
CORTE
ESC 1:25



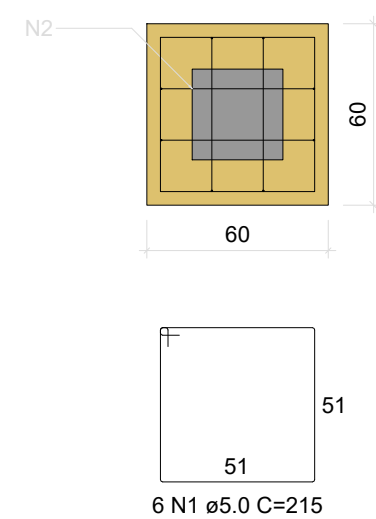
BI-P30
1xR30
PLANTA
ESC 1:25



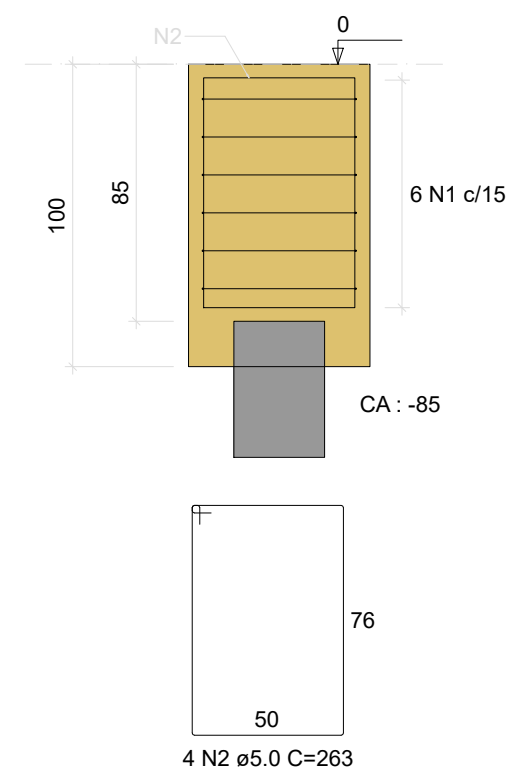
CORTE
ESC 1:25



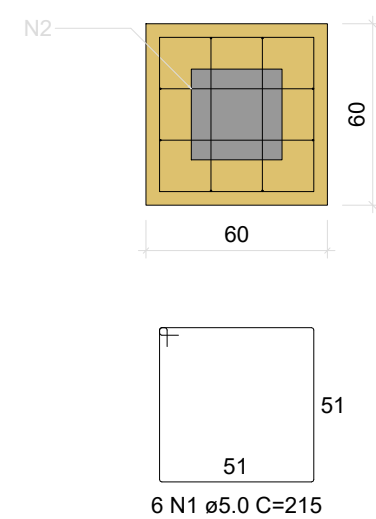
BI-P31
1xR30
PLANTA
ESC 1:25



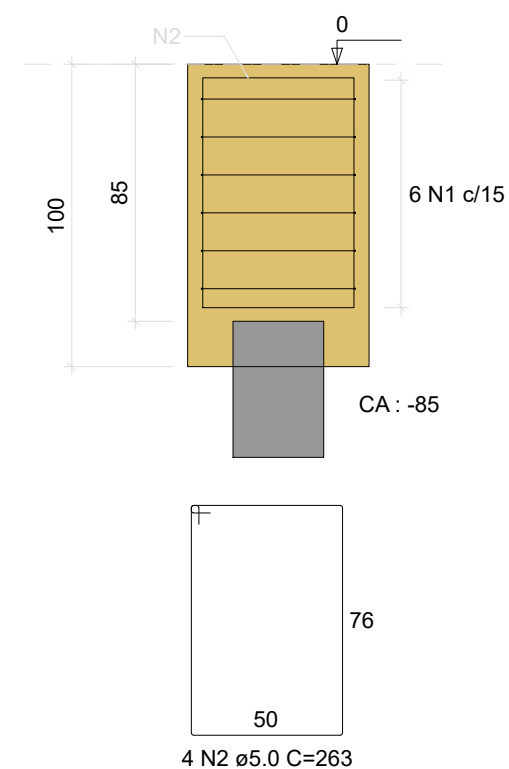
CORTE
ESC 1:25



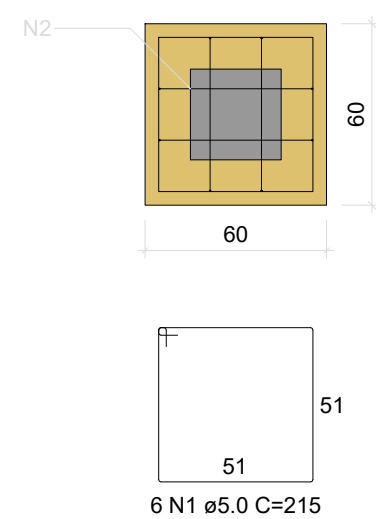
BI-P32
1xR30
PLANTA
ESC 1:25



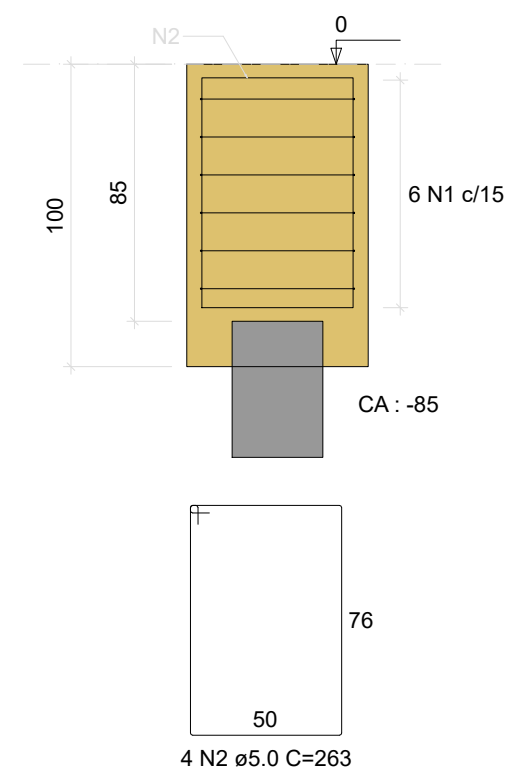
CORTE
ESC 1:25



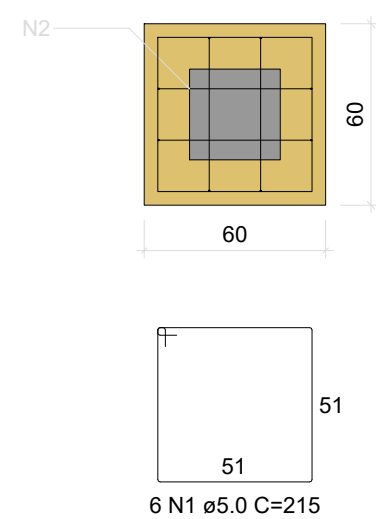
BI-P33
1xR30
PLANTA
ESC 1:25



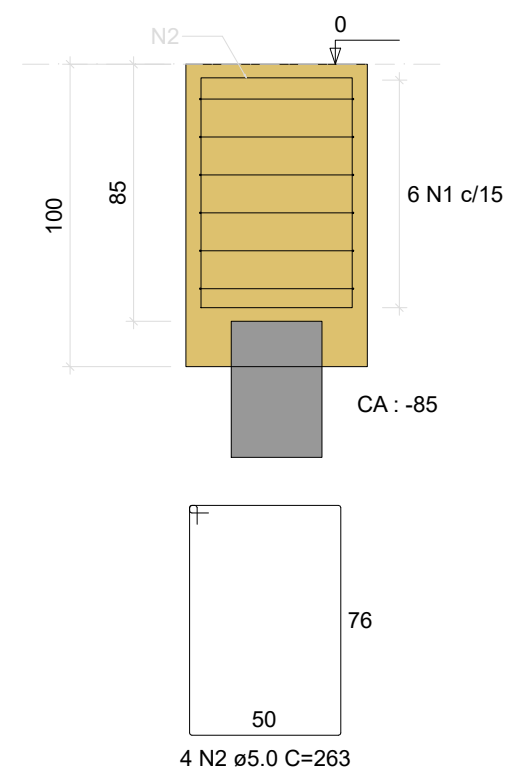
CORTE
ESC 1:25



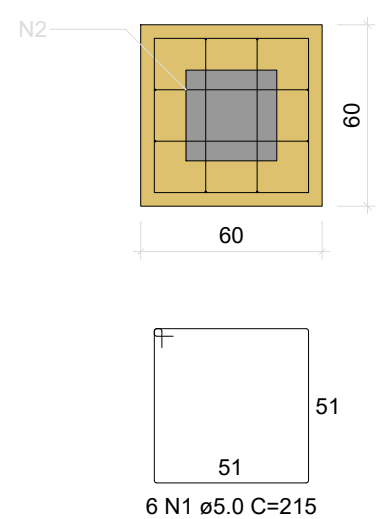
BI-P34
1xR30
PLANTA
ESC 1:25



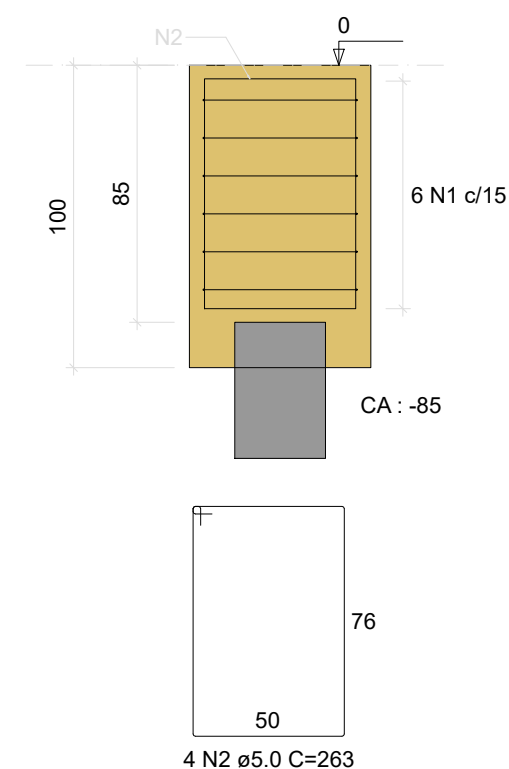
CORTE
ESC 1:25



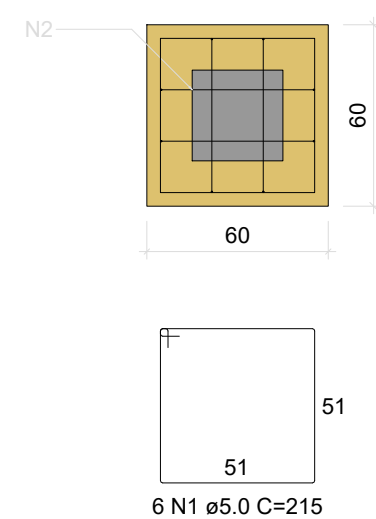
BI-P35
1xR30
PLANTA
ESC 1:25



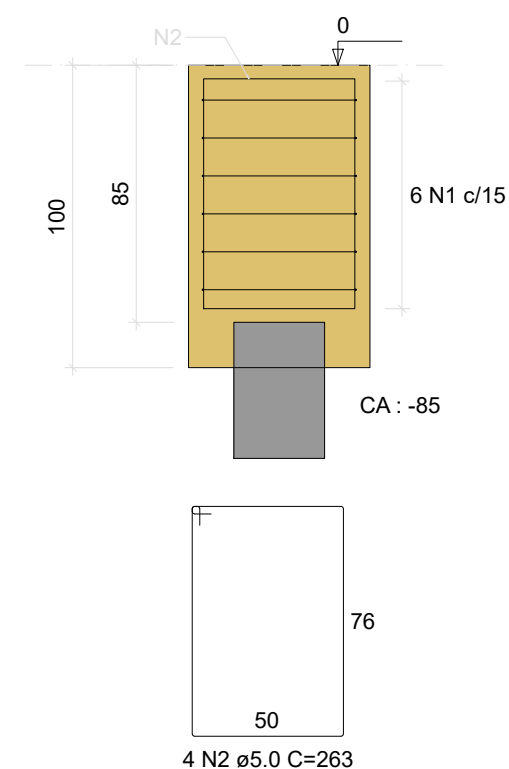
CORTE
ESC 1:25



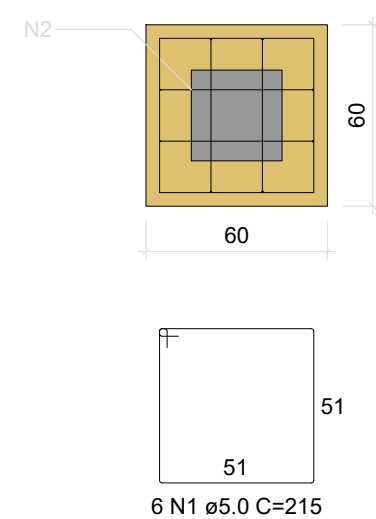
BI-P36
1xR30
PLANTA
ESC 1:25



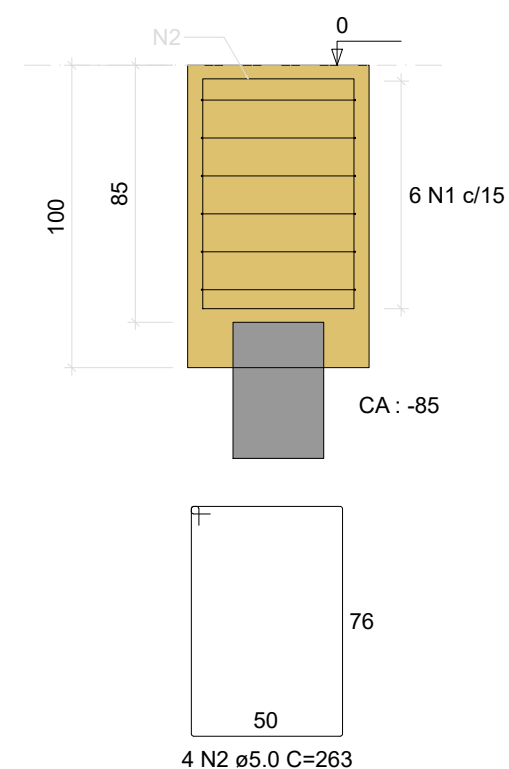
CORTE
ESC 1:25



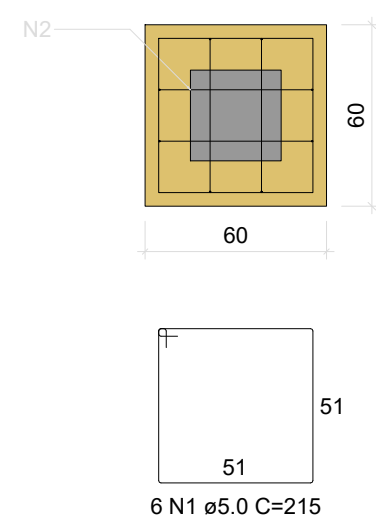
BI-P37
1xR30
PLANTA
ESC 1:25



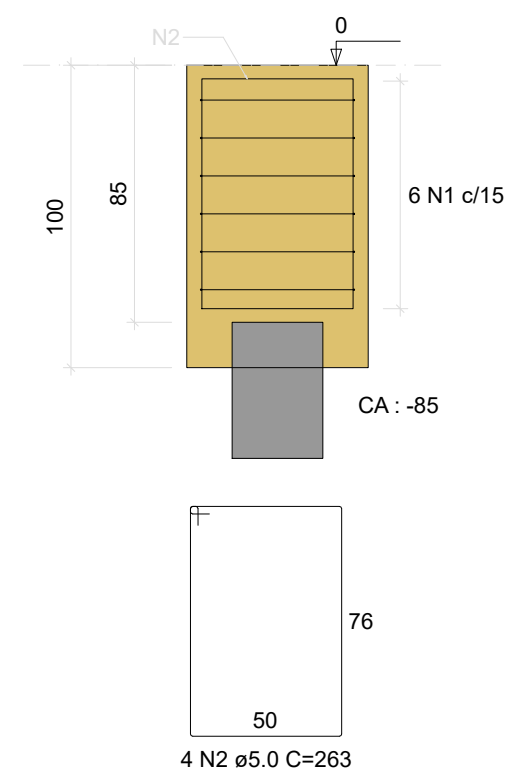
CORTE
ESC 1:25



BI-P38
1xR30
PLANTA
ESC 1:25



CORTE
ESC 1:25



RELAÇÃO DO AÇO

BI-P20	BI-P21	BI-P22
BI-P23	BI-P24	BI-P25
BI-P26	BI-P27	BI-P28
BI-P29	BI-P30	BI-P31
BI-P32	BI-P33	BI-P34
BI-P35	BI-P36	BI-P37
BI-P38		

AÇO	N	DIAM (mm)	QUANT	C.UNIT (cm)	C. TOTAL (cm)
CA60	1	5.0	114	215	24510
	2	5.0	76	263	19988

RESUMO DO AÇO

AÇO	DIAM (mm)	C. TOTAL (m)	PESO + 10% (kg)
CA60	5.0	445	75.4
PESO TOTAL (kg)			
CA60		75.4	

Volume de concreto (C-25) = 6.58 m³
Área de forma = 45.60 m²

Setor I - SI	Setor II - SII
--------------	----------------

TODAS AS MEDIDAS E NÍVEIS DEVERÃO SER CONFERIDOS NO LOCAL.

R003			
R002			
R001			
REVISÃO	ALTERAÇÕES	EMISSION	RESPONSÁVEL

UNIDADE DE SAÚDE QUINTA DO PORTAL

PREFEITURA MUNICIPAL DE PORTO ALEGRE
SECRETARIA MUNICIPAL DE OBRAS E INFRAESTRUTURA
DIRETORIA DE PROJETOS E OBRAS VIÁRIAS

RESPONSÁVEIS TÉCNICOS PROJETO DE ARQUITETURA: JULIANO FABRO ARQUITETO E URBANISTA CAU A22875-3 ID. FUNC. 1609270	PROJETO DE ARQUITETURA: LUIZ PRESTES ARQUITETO E URBANISTA CAU A23531-8 ID. FUNC. 270122	PROJETO EXECUTIVO ESTRUTURAL: AMANDA DA CUNHA FIGUEIRA ENGENHEIRA CIVIL CREA RS193.391 ID. FUNC. 1606638	COORDENADOR CÉSAR FABRÍCIO BREDA DESENHO AMANDA
---	--	--	--

OBRA	US QUINTA DO PORTAL	ÁREA	672.53 m²		
ENDEREÇO	ESTRADA AFONSO LOURENÇO MARIANTE, Nº 5547 - LOMBA DO PINHEIRO	MUNICÍPIO	PORTO ALEGRE/RS		
PROJETO	EXECUTIVO ESTRUTURAL	ASSUNTO	SETOR SI BLOCOS DE FUNDAÇÃO - 02	Nº PRANCHA	PE03
ESCALA	INDICADA	DATA	ABRIL/2024		
NOME ARQUIVO USQP-2024-EST-PEE.dwg					